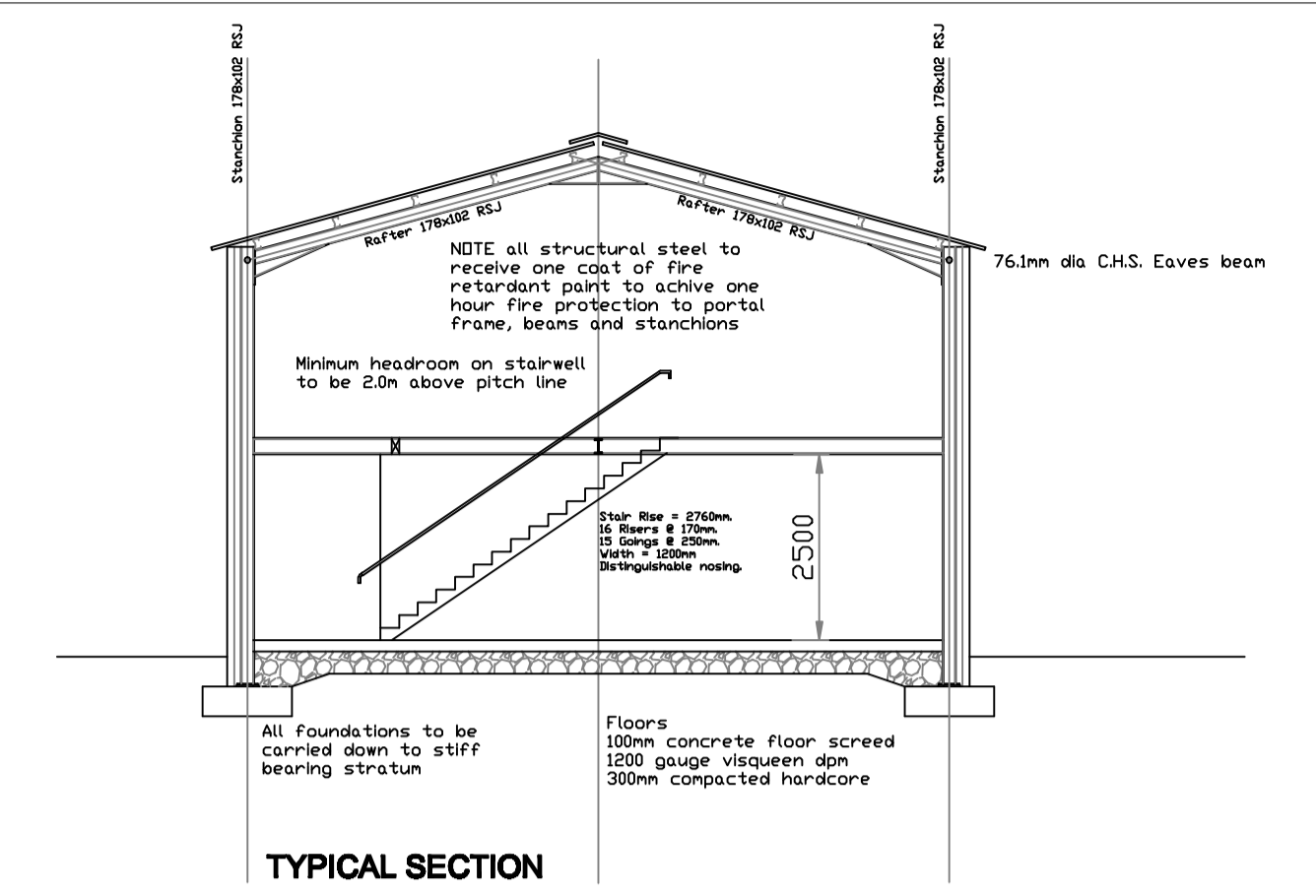
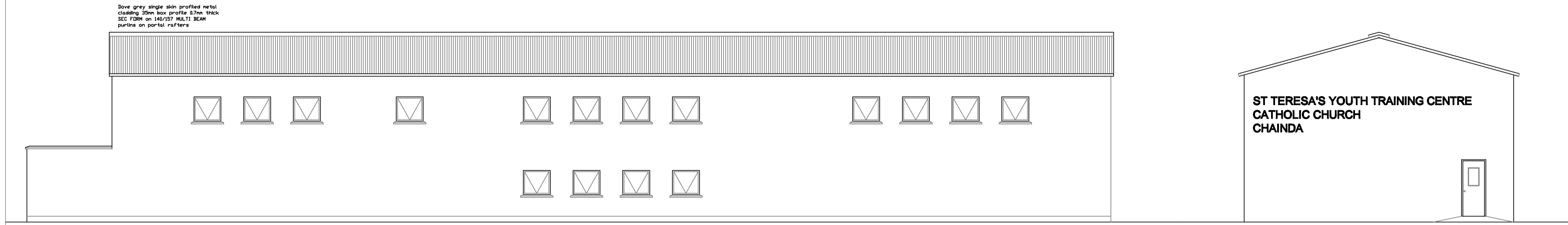


FRONT ELEVATION

END ELEVATION

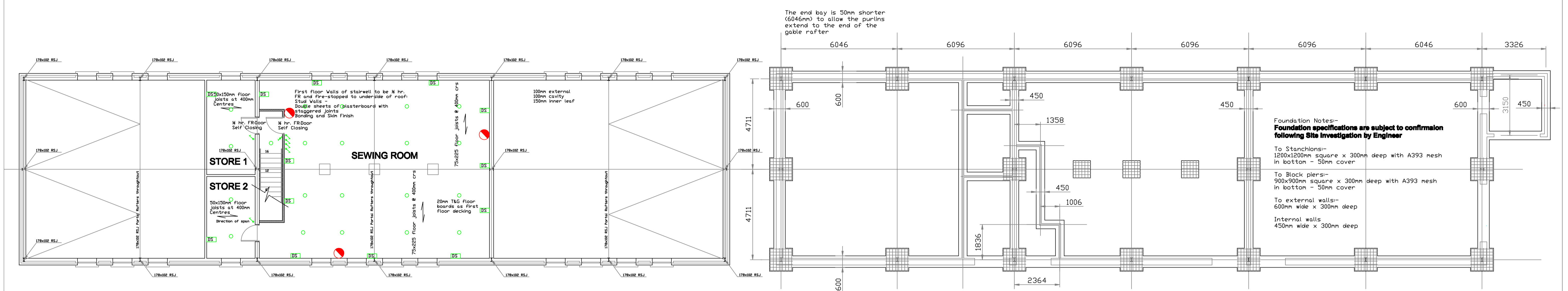


TYPICAL SECTION



REAR ELEVATION

END ELEVATION



FIRST FLOOR PLAN

FOUNDATION LAYOUT PLAN



GROUND FLOOR PLAN

- DS Double Socket
- CS Comado Socket c/w 3 Phase Isolator R H/L
- Light Switch
- 100 W Light Bulb
- Distribution Board
- Distribution Sub-board
- Two-way Light Switch
- 1 No. 3 Litre Water Heater Cover sink/c/w single phase Isolator
- 1 No. 10 Litre Water Heater Cover sink/c/w single phase Isolator
- Fire Extinguisher

PG QUINN LTD			
<small>15 Derrybreck Road, Co. Wick, Co. Wick, Co. Wick. Telephone: +44 (0)28 8774 1444 E-mail: quinnpg@quinnpg.com</small>			
Project: ST TERESA'S YOUTH TRAINING CENTRE	Project No.: 283	Date: 21 FEB 2011	Scale: 1:100
Client: CATHOLIC CHURCH, CHAINDA	Drawing No.: 283 - 01	Rev:	
Drawing Title: PLANS & ELEVATIONS		<small>The copyright of this drawing remains the property of PG Quinn Limited and may not be copied, reproduced, retained or disclosed to any unauthorised person or entity without written permission.</small>	